

A large graphic on the left side of the slide, consisting of three concentric circles. The circles are divided into four quadrants by a vertical line. The top-left and bottom-right quadrants are a light teal color, while the top-right and bottom-left quadrants are a darker teal color. The circles overlap, creating a sense of depth and movement.

# polynid

Investors deck

May 2026

# Forward Looking Statement

This presentation of PolyPid Ltd. (the “Company”) contains “forward-looking statements” within the meaning of the Private Securities Litigation Reform Act and other securities laws. Words such as “expects,” “anticipates,” “intends,” “plans,” “believes,” “seeks,” “estimates” and similar expressions or variations of such words are intended to identify forward-looking statements. For example, the Company is using forward-looking statements when it discusses statements relating to our objectives, plans, and strategies, the expected timing of trials, the research, development, and use of our platform technologies, technologies, products and product candidates, potential benefits and advantages of our products and product candidates, and all statements (other than statements of historical facts) that address activities, events, or developments that the Company intends, expects, projects, believes, or anticipates will or may occur in the future, the safety, efficacy and benefits of D-PLEx100, the expected timing for NDA submission, FDA acceptance letter and PDUFA date, submission for NTAP reimbursement, EU submission, FDA approval and EU approval and US addressable market. Forward-looking statements are not historical facts, and are based upon management’s current expectations, beliefs and projections, many of which, by their nature, are inherently uncertain. Such expectations, beliefs and projections are expressed in good faith.

However, there can be no assurance that management’s expectations, beliefs and projections will be achieved and actual results may differ materially from what is expressed in or indicated by the forward-looking statements. Forward-looking statements are subject to risks and uncertainties that could cause actual performance or results to differ materially from those expressed in the forward-looking statements. For a more detailed description of the risks and uncertainties affecting the Company, reference is made to the Company’s reports filed from time to time with the Securities and Exchange Commission (“SEC”), including, but not limited to, the risks detailed in the Company’s Annual Report on Form 20-F, filed with the SEC on February 25, 2026. Forward-looking statements speak only as of the date the statements are made. The Company assumes no obligation to update forward-looking statements to reflect actual results, subsequent events or circumstances, changes in assumptions or changes in other factors affecting forward-looking information except to the extent required by applicable securities laws. If the Company does update one or more forward-looking statements, no inference should be drawn that the Company will make additional updates with respect thereto or with respect to other forward-looking statements.



## Company Snapshot

PolyPid is an innovative biopharmaceutical company dedicated to improving patient outcomes by elevating treatment effectiveness, right where care begins.

### Core Technology

Kynatrix™ Long-Acting, Controlled-Release Technology

### Lead Product

D-PLEX<sub>100</sub> achieved 60% reduction in SSI in Phase 3 trial

### Unique Value

Customizable controlled release, linear delivery of APIs

### Next big opportunity

Ultra long GLP-1 Receptor Agonist

### Patents

176\* granted & pending

### Employees

~80\* employees

### Publicly Traded

NASDAQ: PYPD

### Built for Scale

GMP-certified 18,000 sq ft commercial-ready facility

# The Power of Uncompromising Precision



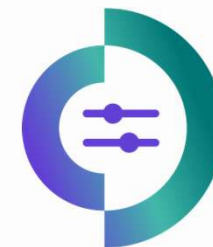
## **Substance Versatility**

Suitable for antibiotics, cytotoxic agents, peptides, nucleic acids, and more.



## **Zero-Burst Release**

No initial drug spike



## **Customizable Duration**

Tunable from several days to several weeks.



## **Layered Matrix Architecture**

Controlled sequential disintegration.



## **Scalable Manufacturing Process**

Designed for consistent quality and commercial-scale production.



## **Minimal Systemic Exposure**

Reduced toxicity and side effects.

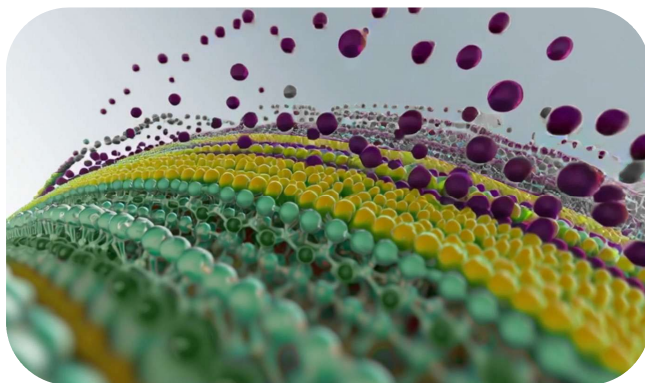
A microscopic view of plant cells, likely from a leaf, showing numerous yellow chloroplasts. The cells are arranged in a cluster, and the chloroplasts are visible as bright yellow, oval-shaped structures within the cells. The background is a light gray gradient.

# Lipids

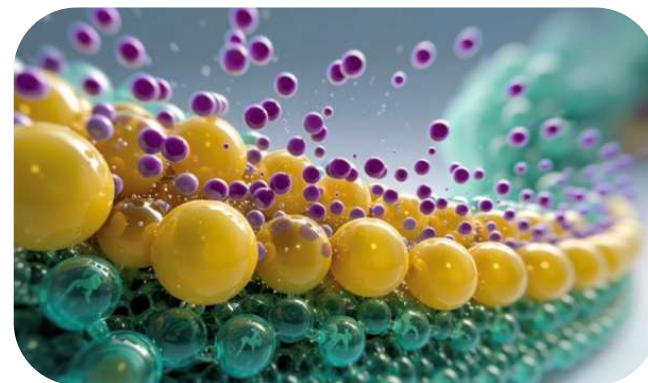
# Introducing The PLEX Platform



Drug molecules are embedded within the alternating polymer-lipid layers



Body moisture activates the platform, triggering controlled surface degradation of the polymer-lipid matrix and constant, linear drug release.



Release is sustained and customizable for days to weeks



# Portfolio Flagship Product: D-PLEX<sub>100</sub>

### What is it?

A high-concentration doxycycline formulation (broad-spectrum antibiotic) delivered locally over 30 days.

### Indication for Use

Prevention of surgical site infections (SSIs) following abdominal colorectal surgery.

### Prevalence: 15%–25% in abdominal surgery

Colorectal surgery, large incisions, and patients with obesity, diabetes, or immunocompromised have a higher risk of infection.

### Administration

Applied at the time of surgical closure, with dosing determined by the length of the surgical incision

### Regulatory status

Breakthrough Therapy, Fast Track, and QIDP designations, FDA 505(b)(2)

# Easily Applied in Any Surgical Setting

Instruction for use:



D-PLEX<sub>100</sub> applied in abdominal surgery:



# The Largest Phase III Trial for Prevention of SSI in Over a Decade



## **Population**

Patients undergoing elective abdominal colorectal surgery with incision length > 20 cm

## **Primary efficacy endpoint**

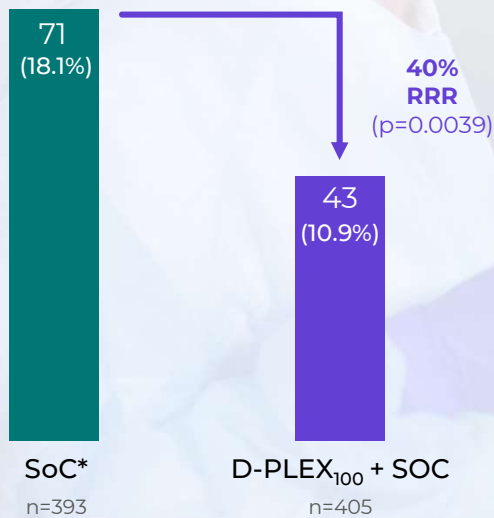
Reduction in SSI, mortality and reintervention within 30 days post index surgery

## **Trial size**

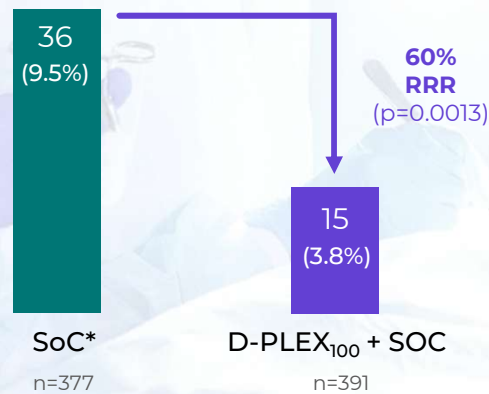
Global trial US, Europe  
ITT cohort: 798 patients

# Phenomenal Phase III Clinical Trial Results

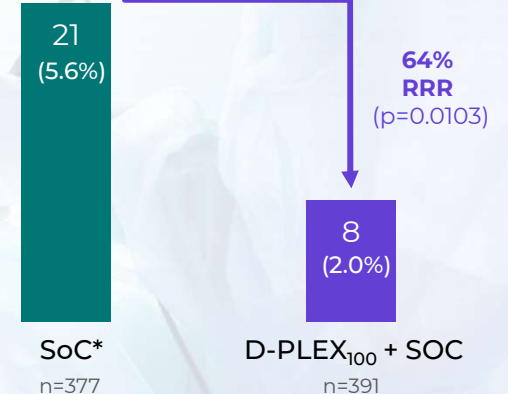
Primary Efficacy Endpoint  
(ITT cohort)



Surgical Site Infection (SSI)  
(ITT Cohort)



ASEPSIS Score >20  
(ITT Cohort)



# A Potential Multi-Million-Dollar Opportunity

**12M/Year**

US total addressable market  
in-patient surgical procedures

**4.4M/Year**

Abdominal Surgeries  
Includes colorectal, gyn,  
urology, and high-risk  
procedures

# Out-Licensing Go-To-Market Strategy



## Geographic Focus

- U.S. first (largest SSI opportunity)
- ROW: seeking partners in major markets



## Revenue Model

- Upfront licensing fees
- Milestones (Development, sales)
- Royalties



## Ideal Sales Partners

- Hospital-focused commercial footprint and P&T engagement experience
- Specialty pharma with infection prevention focus
- MedTech manufacturers with strong surgical portfolio (e.g., sutures, surgical implants)

# Demonstrated Economic Incentive to Drive Adoption

## Direct cost

SSI costs ~\$30K/patient<sup>1</sup> on average

- Prolonged length of stay and higher readmission rates
- Re-operation in some cases (to debride and remove infected / necrotic tissues)

## Indirect cost

CMS 1-3% penalty on all the yearly Hospital Medicare reimbursement

## Reputational cost

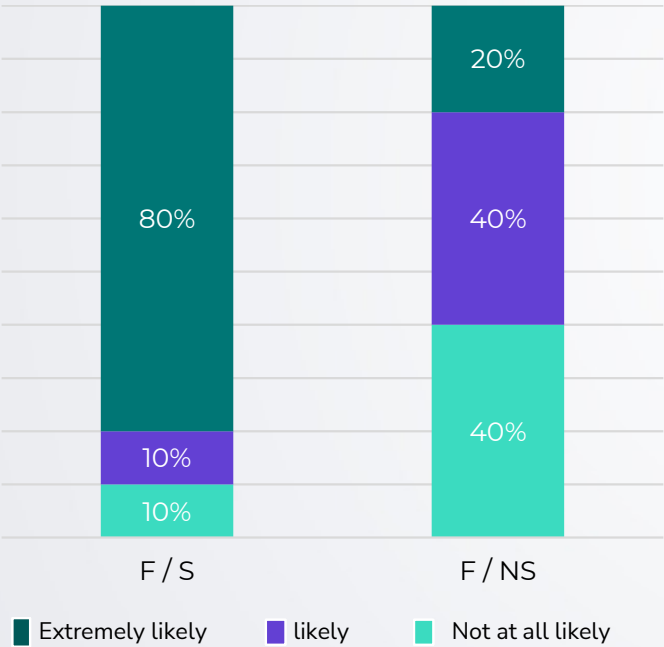
Hospital SSI rates are public information and have direct influence on hospital ranking by CMS and U.S. News best hospitals ranking

**D-PLEX<sub>100</sub> is eligible for NTAP program:  
up to 75% reimbursement of cost of drug**

1. Stone PW. Economic burden of healthcare-associated infections: an American perspective. Expert Rev Pharmacoecon Outcomes Res. 2009 Oct;9(5):417-22.

# Surgeons perceive D-PLEX<sub>100</sub> to be more valuable overall than currently used interventions

How likely are you to prescribe D-PLEX<sub>100</sub> to prevent SSIs in eligible surgical patients? (% of responders)



## Most Mentioned Patients Appropriate for D-PLEX<sub>100</sub>

**Patient with a higher risk of infection** immunocompromised, comorbidities, obese, uncontrolled diabetics, transplant patients

**Patients undergoing Colorectal Surgeries**

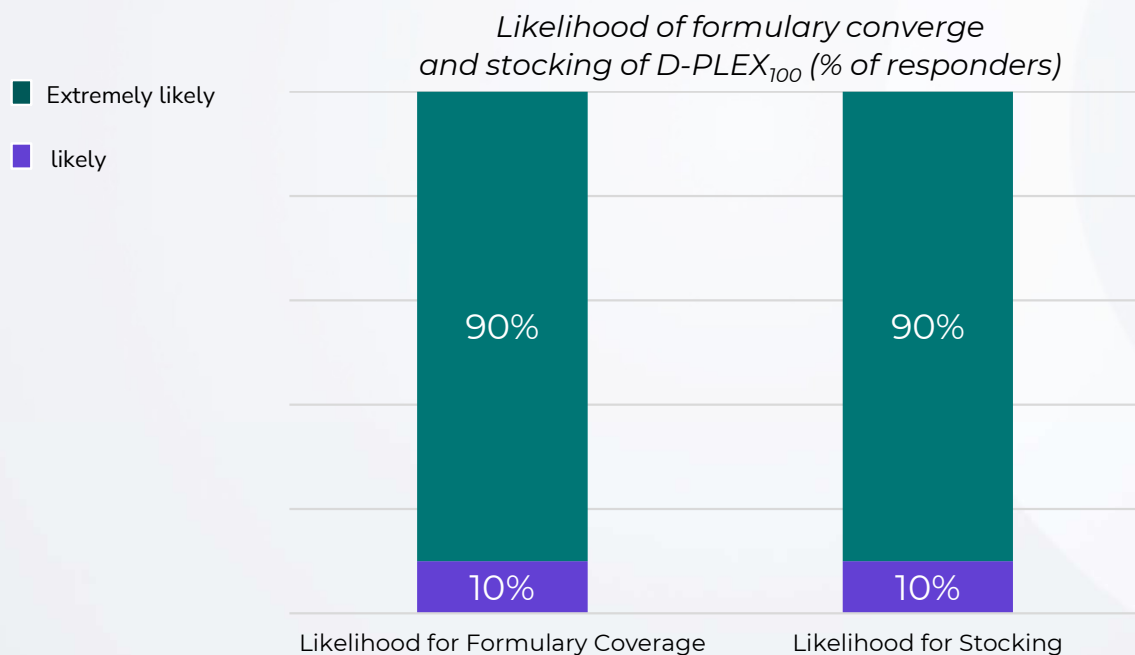
**Any procedure with incisions >10 cm**

F/S – On Formulary & Stocked; F/NS = On Formulary, but NOT Stocked; NF/NS = Not on Formulary & Not Stocked

14 Source: Indegene Market Research October 2025

# Pharmacy Directors expect high likelihood of formulary coverage and stocking of D-PLEX<sub>100</sub>

Value perception and **likelihood for formulary coverage** and stocking are high and grow even higher with the introduction of **NTAP**



# Manufacturing Excellence Enabling Global Scale

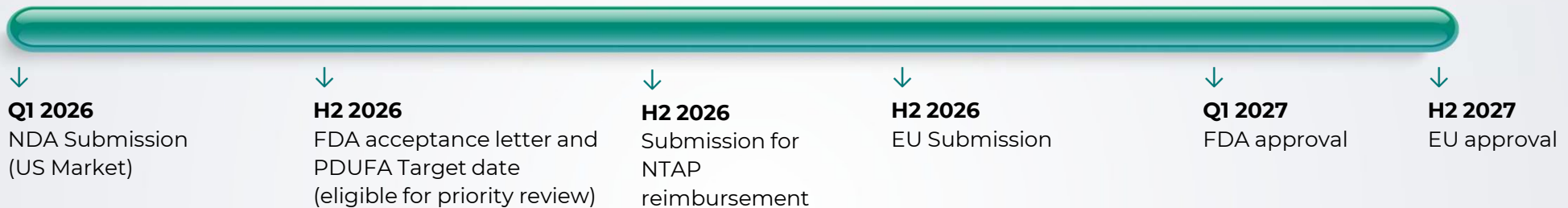
PolyPid operates an 18,000 sq. ft., state-of-the-art GMP facility purpose-built for its proprietary Kynatrix™ drug-delivery technology

The site enables precise, reproducible production of our proprietary formulations and supports scalable manufacturing from clinical to commercial volumes, ensuring consistent product performance and global supply readiness



# Always Delivering, Our Milestones Too

## Expected Timeline



### ✓ Completed Phase 3 Global SHIELD II Trial

- Reached primary and all key secondary endpoints
- ~60 global clinical sites

### ✓ Completed Full CMC & GMP Readiness

State-of-the-art 18,000 sq ft GMP manufacturing facility certified by Israel MoH & EU Qualified Person

### ✓ Rolling NDA Submission Ongoing

NDA submission process started on March 30, 2026.

CMC and non-clinical modules submitted.

Submission completion expected imminently.

# Innovation Strategy

Our strategy is to leverage the power of our Kynatrix™ delivery platform to elevate treatment effectiveness

Collaborate with R&D partners to:



Improve efficacy



Extend molecule  $\frac{1}{2}$  life



Eliminate systemic side effects and toxicity

Key Therapeutic Areas

Surgical Site Infection

Metabolic Diseases & Obesity

Oncology

# Innovation Pipeline

## Current Pipeline

Therapeutic Area	Product name	Pre-Clinical	Phase 1	Phase 2	Phase 3	Regulatory Review	In-house / partnership
SSI	D-PLEX <sub>100</sub>						In-house
Metabolic Disease	PP03A						In-house
Oncology	PP04A						

Indicated for prevention of surgical site infections (SSIs) following abdominal colorectal surgery. PDUFA date expected early 2027.

Ultra-long GLP-1 receptor agonist released over +50 days in a linear manner overcoming the peak and trough release profile seen in current weekly injection therapy.

Intratumoral delivery of Immunogenesis potent anti-tumor STING agonist combined with PolyPid's delivery technology to enhance treatment for solid tumors.

# Financials



Stock Information	
Listing	NASDAQ
Ticker	PYPD
52-week range <sup>1</sup>	\$2.44-\$5.12
Market cap <sup>1</sup>	\$100 M
Share Structure	
Shares outstanding	19.4 M
Pre-funded warrants and shares held in abeyance	3.1 M
Warrants	0.6 M @ \$3.61 exercise price
Warrants	7.3 M @ \$4.50 exercise price
Options outstanding	3.0 M @ \$4.8 WAEP



## Analyst coverage



CRAIG-HALLUM  
CAPITAL GROUP LLC

 Citizens Bank®



ROTH



HCW  
H.C. WAINWRIGHT & CO.

# Built for Scale and Growth



## Large, Attractive Market Opportunity

Addressing a substantial global market of 12M surgeries annually with significant unmet need in surgical site infection prevention.

## Multiple Near-Term Catalysts

FDA submission Q1 2026

Expected PDUFA date early 2027

## Innovation-Driven Pipeline

A growing pipeline built on PolyPid's differentiated Kynatrix™ platform, enabling expansion into additional high-value indications beyond the lead program.



Thank You!

**polyrid**